

# Qivi<sup>®</sup> Automated Urine Management

## DIRECTIONS FOR USE

**READ ALL INSTRUCTIONS CAREFULLY BEFORE USING**

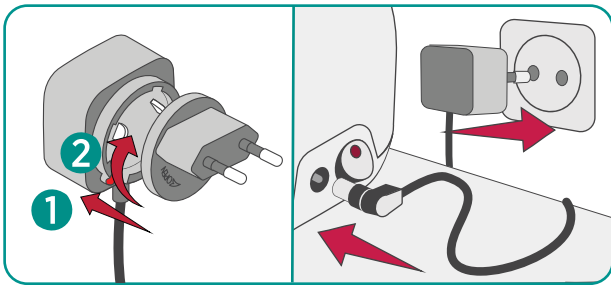
**ATTENTION:** This poster provides a quick reference for proper use of Qivi<sup>®</sup> AUM.

The Qivi<sup>®</sup> Automated Urine Management is intended to be used with vacuum enabled external urine management devices in institutional and home care settings.

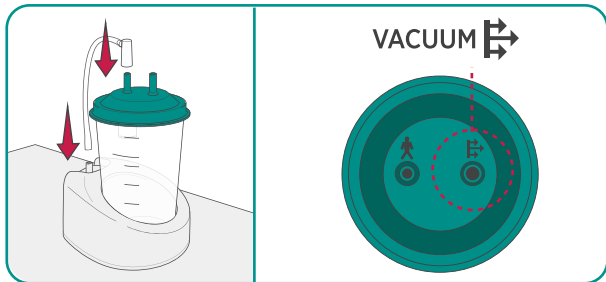
Please consult product IFU for further information.

### PREPARATION OF DEVICE

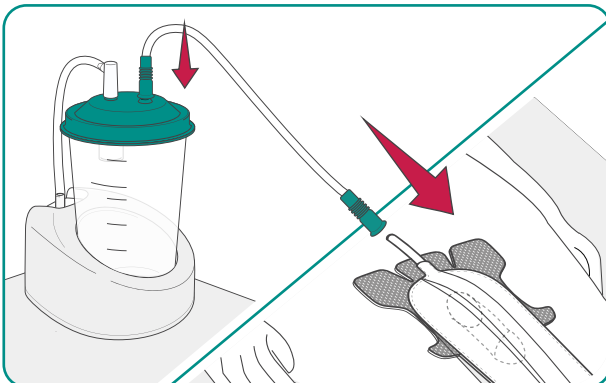
1. Place the suction unit next to the bed or chair so that it doesn't create a tripping hazard.
2. Select the appropriate plug according to your region and connect it onto adapter by aligning it with the adapter and rotating clockwise.
3. Plug the AC-to-DC power adapter pin into the device outlet and the adapter plug into an A/C power outlet.



4. Place the canister in the suction unit and press down firmly on the lid to ensure the lid is sealed.



5. Connect the Pump tube connector to the port labelled 'Vacuum' on canister lid and the other end of Pump tubing to the port on the suction unit.



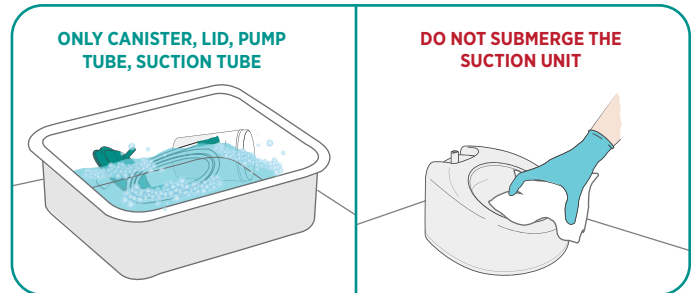
6. Connect one end of the Drainage tubing to the urine inlet port labelled as 'PATIENT' on the canister lid and the other end to the external urine management device.
7. Ensure all the connections are secure. Turn the device on by pressing the ON/OFF switch. The indicator light on the switch will start to glow.

### CLEANING AND DISINFECTION

All components of the device should be cleaned and disinfected at the time of each use or at least once each day.

#### CLEANING

1. Thoroughly rinse the canister, canister lid and both the tubes in soapy cool tap water.



2. Pat dry the contents with clean lint free towel.
3. Repeat the process if there is any sign of dirt.
4. Submerge the canister in 70% IPA and flush the IPA through tubes.
5. Allow the components to air dry.

#### DISINFECTION

6. Soak lint free cloth in 70%IPA and wipe the suction unit.
7. Dry the suction unit using a lint free towel.

### EMPTY AND REPLACEMENT

#### EMPTY

To prevent overflow, empty the canister regularly or before the volume reaches 1000cc (mL).

1. Disconnect the power adapter from the power outlet and from the device.
2. Disconnect both ends of the Drainage tubing and Pump tubing from the canister.
3. Lift the canister from the base. **DO NOT** lift canister by the lid.
4. Carefully remove the lid and dispose of urine in urinal, toilet or according to facility protocol.
5. Clean the tubes, canister, and the suction unit according to cleaning instructions in the "Cleaning and Disinfection" section.



## REPLACEMENT

7. Replace canister and tubes at least once every 30 days.
8. Ensure all components are dry and reassemble the device according to the instructions in the "Preparation of Device" section.
9. Replace if you notice any of these:  
Canister, Drainage tubing or Pump tubing have urine residue build-up, appear cloudy or appear discoloured.
10. Canister develops cracks or tubes gets torn.

## GENERAL GUIDELINES

1. Use only authorized accessories.
2. For optimal results, position the suction unit at a height same as the patient bed.
3. The device is capable of operating continuously; however, to extract maximum life from the product, it is recommended to limit its usage to no more than 8 hours per day.
4. The QiVi® AUM device should be stationary while in use. The device is not designed to be used while in transit.
5. Failure to clean and/or replace accessories may affect the performance and life of the device.
6. The useful life of the canister and all tubings is 30 days.
7. Do not lift canister by the lid.
8. Device is not dishwasher safe.

## DO'S AND DON'TS

### DO'S

1. Place the device closer to the patient so that the external catheter is easily accessible and doesn't create a tripping hazard.
2. Ensure all the connections are secure before use.
3. If urine or water has streamed into the suction unit, discontinue use of the device.
4. Keep the cord away from heat.
5. After use, dispose the device according to facility protocols.
6. When not in use unplug the device from power outlet.
7. To clean the suction unit, wipe it using a lint free towel/fabric dampened with 70% IPA.
8. Unplug immediately, if the device falls into water.

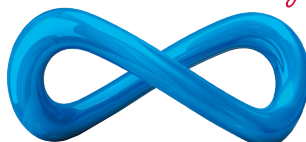
### DON'TS

1. Do not immerse the suction unit or cords into water.
2. Do not use the device for stool or any other fluid collection other than urine.
3. Do not open or dismantle the suction unit as it may effect the performance.
4. Do not lift the canister by lid.
5. Do not store if the parts are wet.
6. Not dishwasher safe.

UK and Ireland Distribution:

iMEDicare LTD  
Unit 11 Shakespeare Indus. Est.  
Watford WD24 5RR  
+44 (0) 1923 23 77 95 | [contact@imedicare.co.uk](mailto:contact@imedicare.co.uk)  
[www.MyPelvicHealth.co.uk](http://www.MyPelvicHealth.co.uk)

**iMEDicare**  
*Pelvic Health Naturally...*



**Connect With Us!**

+44 (0) 1923 23 77 95  
[orders@imedicare.co.uk](mailto:orders@imedicare.co.uk)

**conSure**  
MEDICAL

Dallas, Texas, USA  
MSM-12022-02-01 © CM Technologies, Inc.  
All rights reserved | DCA-CMI-24-11-002